

# Farbspektrum Aluminium

Farbabweichungen sind nicht auszuschließen.

## Farbgruppe PG I



RAL 6005 HW, Glatt matt



RAL 7016 HW, Glatt matt



RAL 7035 HW, Glatt matt



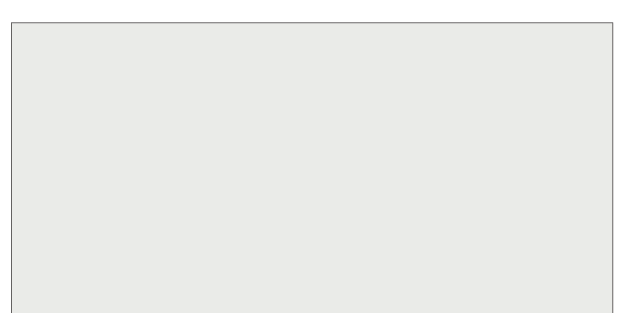
RAL 8001 HW, Glatt matt



RAL 8003 HW, Glatt matt



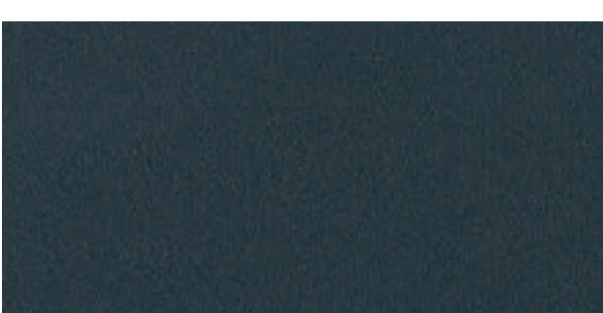
RAL 8017 HW, Glatt matt



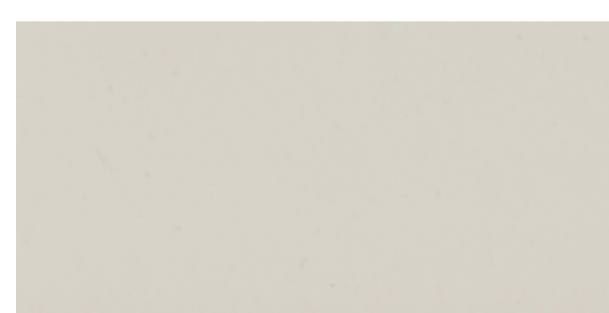
RAL 9016 HW, Glatt matt



RAL 6005 HW-fs, Feinstruktur matt



RAL 7016 HW-fs, Feinstruktur matt



RAL 7035 HW-fs, Feinstruktur matt



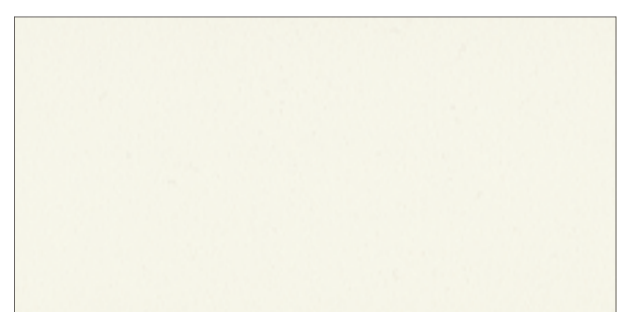
RAL 8001 HW-fs, Feinstruktur matt



RAL 8003 HW-fs, Feinstruktur matt

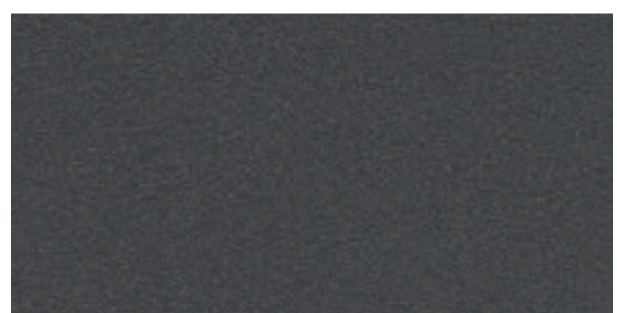


RAL 8017 HW-fs, Feinstruktur matt



RAL 9016 HW-fs, Feinstruktur matt

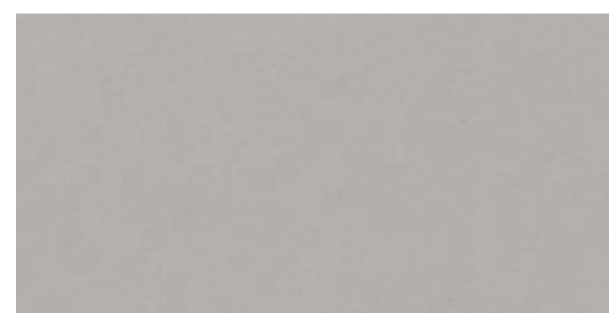
## Farbgruppe PG II



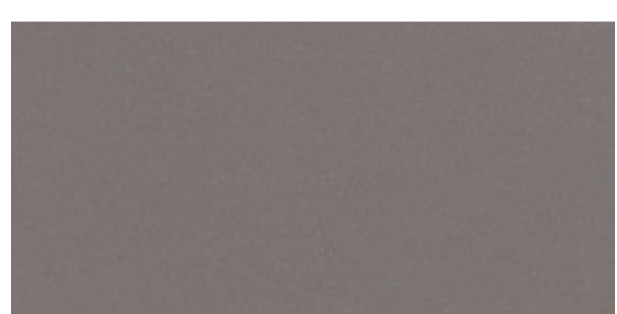
DB 703 HW-fs, Metallic Feinstruktur matt



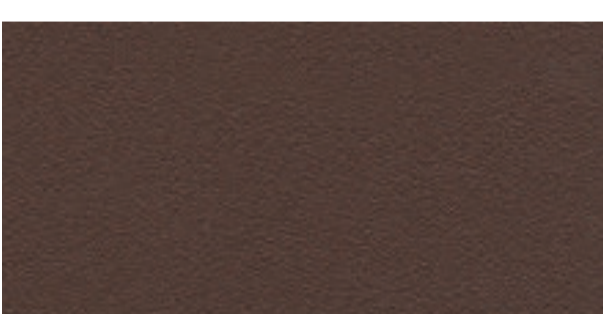
DB 703 HW, Metallic glatt matt



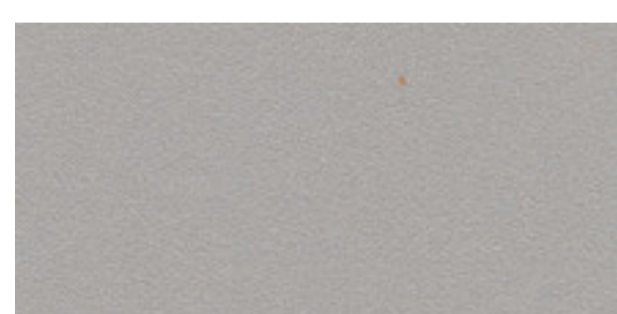
RAL 9006 HW, Metallic glatt matt



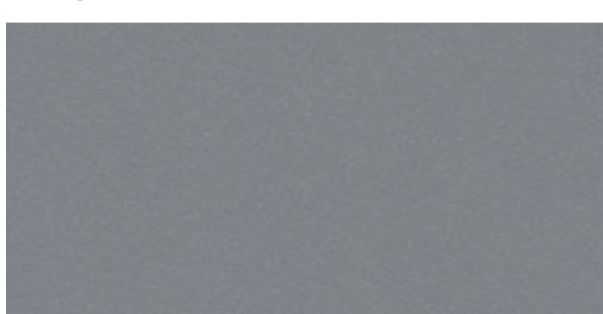
RAL 9007 HW, Metallic glatt matt



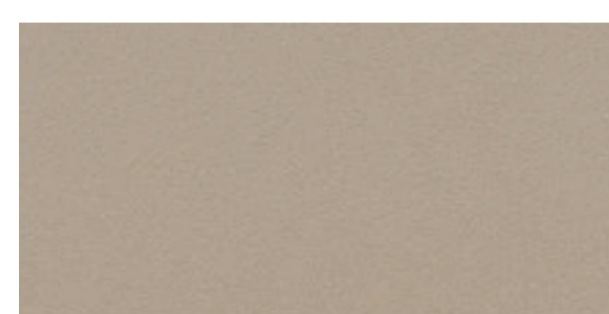
Rostiges Eisen HW-fs, Feinstruktur matt



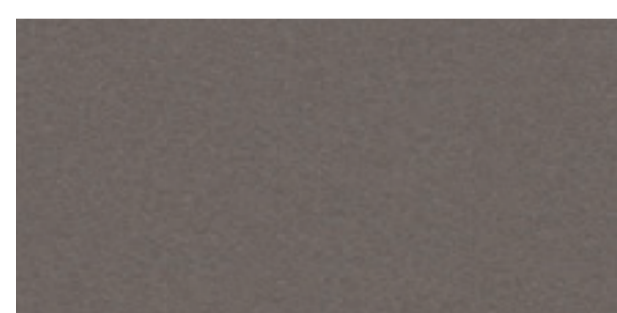
Alpha GS PD HW, Metallic Feinstruktur matt



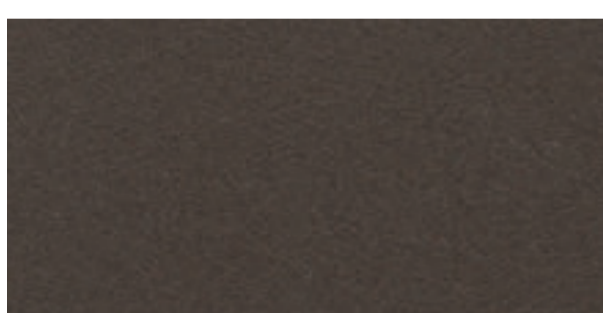
Beta GS PD HW, Metallic Feinstruktur matt



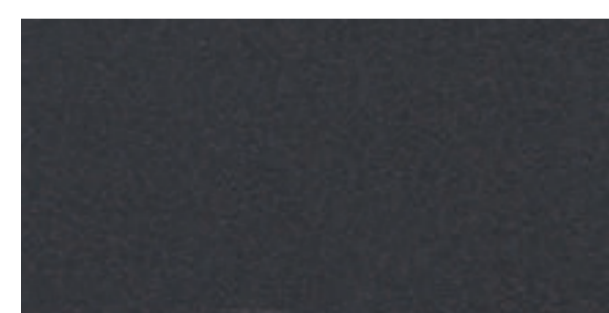
Gamma GS PD HW, Metallic Feinstruktur matt



Delta GS PD HW, Metallic Feinstruktur matt



Eta GS PD HW, Metallic Feinstruktur matt



Epsilon GS PD HW, Metallic Feinstruktur matt



C33, eloxiert



C34, eloxiert

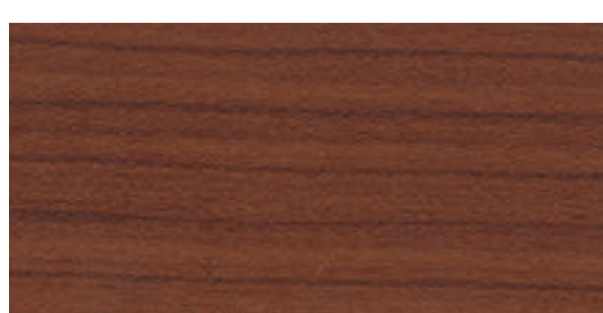


EV1, eloxiert

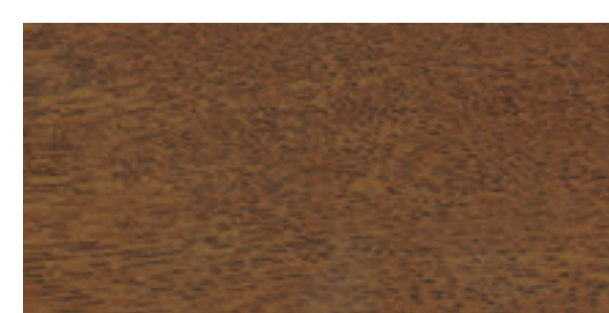
## Farbgruppe PG III



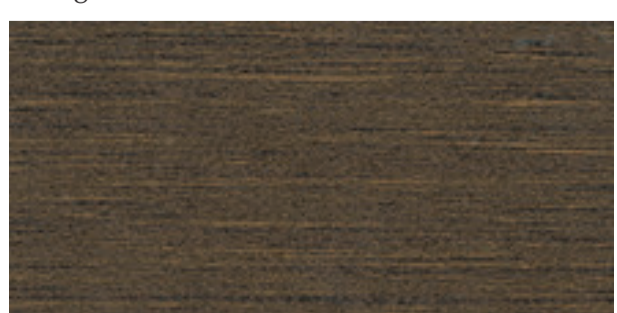
Douglas 1 HW-fs, Feinstruktur matt



Kirsch 1 HW-fs, Feinstruktur matt



Golden Oak HW-fs, Feinstruktur matt



Wenge HW-fs, Feinstruktur matt

HW = Hochwetterfest  
fs = feinstruktur  
matt: entspricht Glanzgrad ca. 25+/- 5 nach ISO 2813